

Annual Carbon Fluxes to (–ve) or from (+ve) the Atmosphere

Ocean Flux (S_{OCEAN})

Land Flux ($S_{\text{LAND}} - E_{\text{LUC}}$)

Total Flux ($S_{\text{OCEAN}} + S_{\text{LAND}} - E_{\text{LUC}}$)

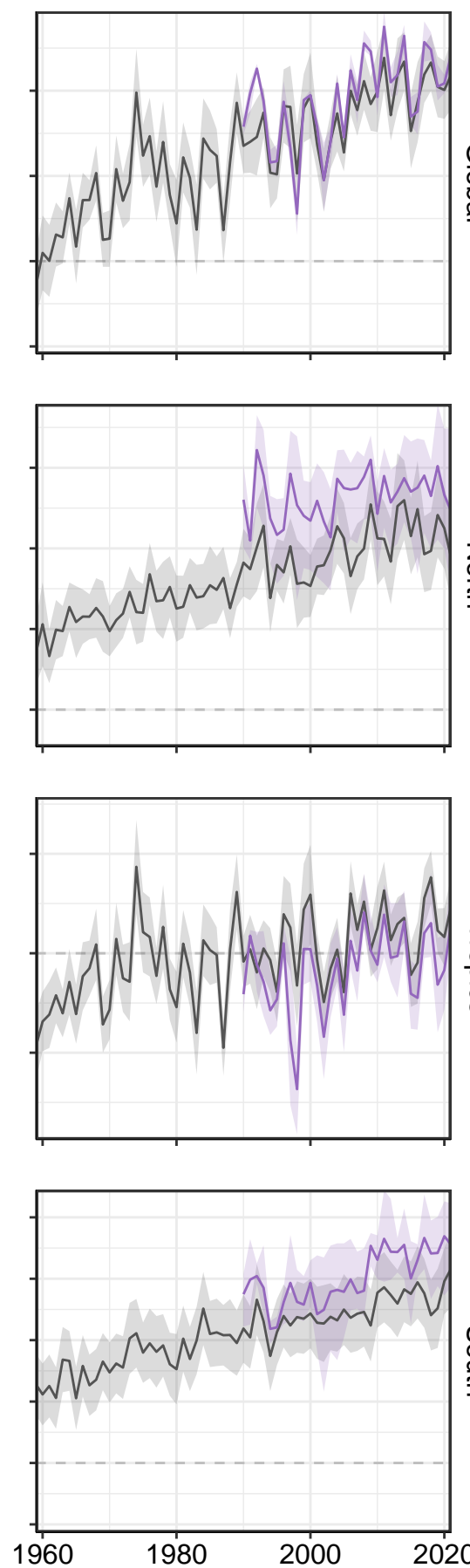
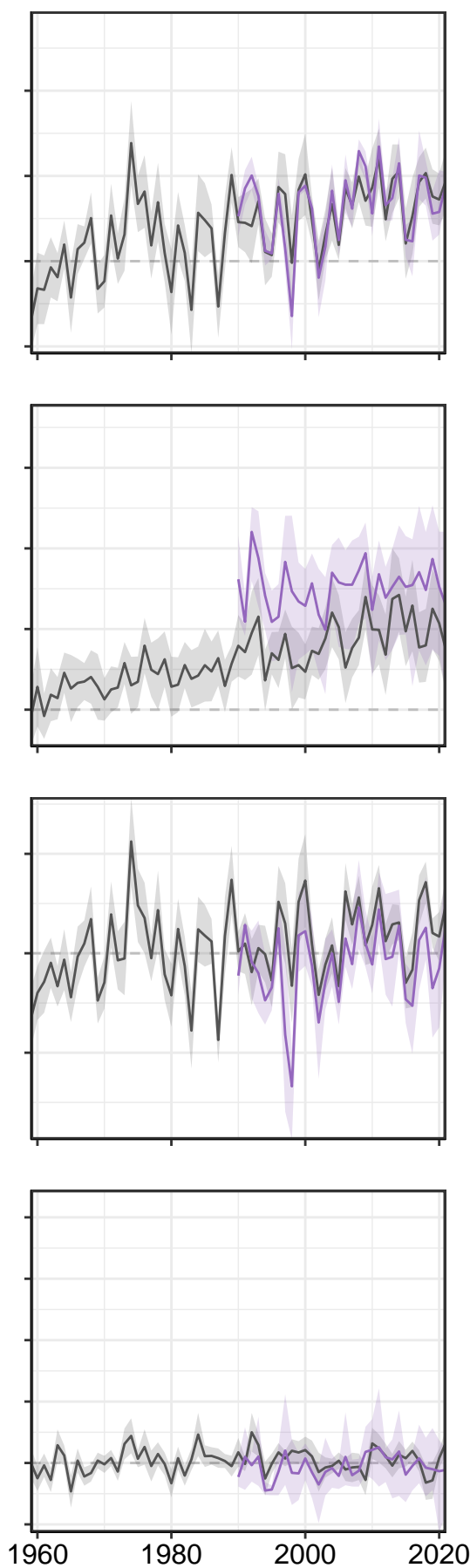
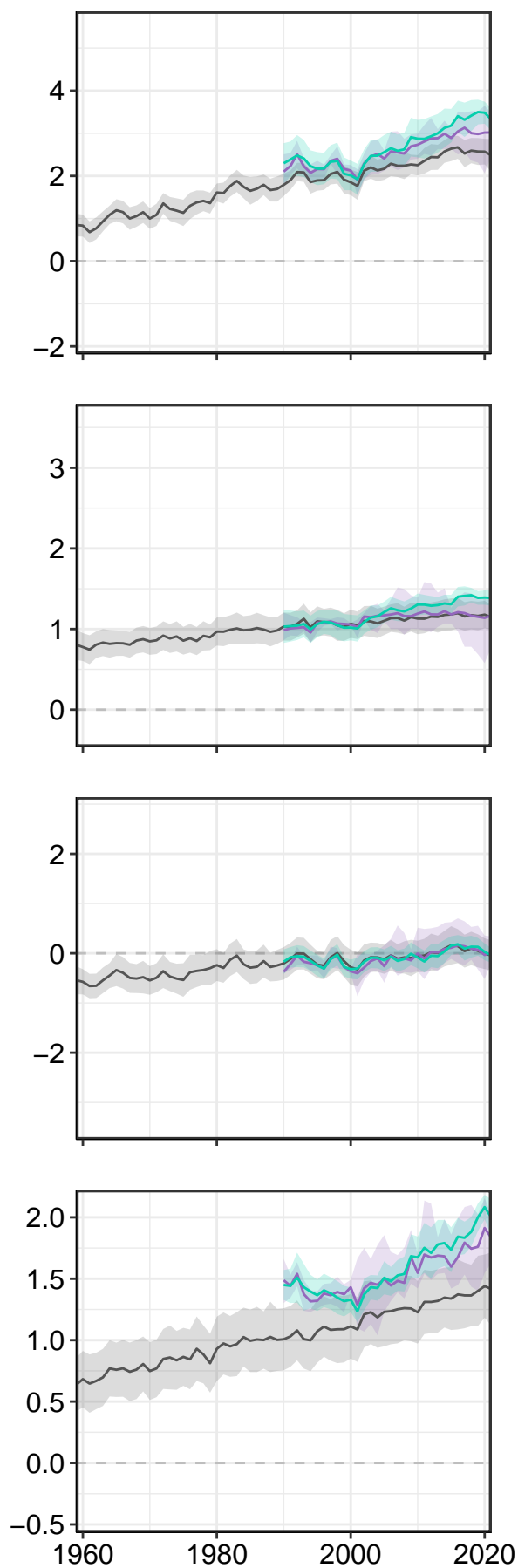
Global

North

Tropics

South

CO₂ Flux (GtC yr⁻¹)



— Process – based models (DGVMs and GOBMs) — Inversions — Data products